

ACCOMMODATION EQUIPMENT	TENT SÉOUNE 5 **	COTTAGE LANGUEDOC ** OCCITANIE ***	CHALET ORPELLIÈRE COTTAGE BALNÉO LAGON AND PATIO ****	CABANE PREMIUM
<b>OUTSIDE</b>				
Terrace	•	•	Covered	Covered
Garden furniture		•	•	•
Bar table + stools	•			
2 Sun loungers		•	•	Pêcheur Jardin
Hammock	•			Canardière Robinson
2 Lounge chairs	•			Canardière
Plancha				Canardière
2 Bikes one with child seat	•		•	•
Situated in landscaped areas car free zone			•	•
<b>BEDROOM(S)</b>				
Blanket and pillow per bed	•	•	•	•
Sheets provided	•		•	•
Twin beds include one pullout bed			Balnéo and Patio	•
Queen-size bed 160x200			Balnéo and Patio	•
High density «Bultex»				
<b>KITCHEN / LIVINGROOM</b>				
Electric hob or gas	•	•	•	•
Crockery	•	•	•	•
Fridge	•	•	•	•
Freezer		•	•	•
Sink	cold water	•	•	•
Electric coffee machine	•	•	•	•
Microwave		•	•	•
Kettle			•	•
Toaster			•	•
Dishwasher			•	•
Heating		•		
Air conditioning (warm and cold)		only occitanie	•	•
TV				•
<b>BATHROOM / WC</b>				
Shower and washbasin		•	•	•
Separate WC		•	•	•
Towels provided	•		•	•
Hairdryer			•	•
<b>FACILITIES AND SERVICES</b>				
Travelcot	•	•	•	•
Highchair	•	•	•	•
Safety deposit box		•	•	•
End-of-stay cleaning included				•
Wifi access included				•

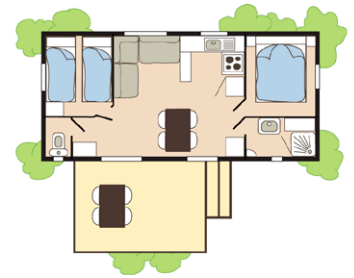
### TENTE SÉOUNE 5 \*\*



5 persons 25+15m<sup>2</sup> - 2 bdrms

A charming tent, set up next to a natural zone, for a comfortable holiday.

### COTTAGE LANGUEDOC AND OCCITANIE \*\*



4/6 persons 30+10 m<sup>2</sup> - 2 bdrms

Situated in a quiet and shady area, with a sofa bed to accommodate up to 6 people

The Occitanie features reversible air-conditioning.

### COTTAGE OCCITANIE \*\*



6 persons 34+10 m<sup>2</sup> - 3 bdrms

This recent accommodation is situated in a quiet and shady area.

Features reversible air-conditioning & parking space within 200 m.

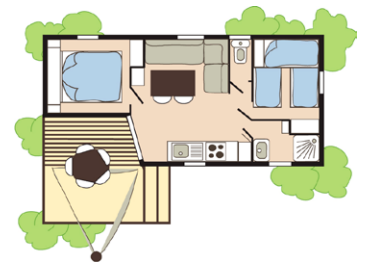
### CHALET ORPELLIÈRE \*\*



5 persons 32+8 m<sup>2</sup> - 2 bdrms

Situated in a shady car free area, this chalet has air conditioning and a contemporary interior design.

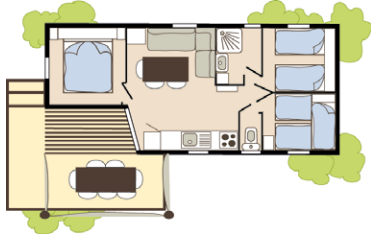
### COTTAGE BALNÉO \*\*



5 persons 27+9 m<sup>2</sup> - 2 bdrms

This accommodation with air conditioning situated close to the Balneo in a car free area.

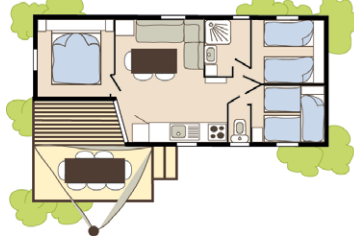
### COTTAGE LAGON 🌳🌳🌳



7 persons 33+19 m<sup>2</sup> - 3 bdrms

This new air conditioned accommodation is situated in a car free zone near the Lagoon area.

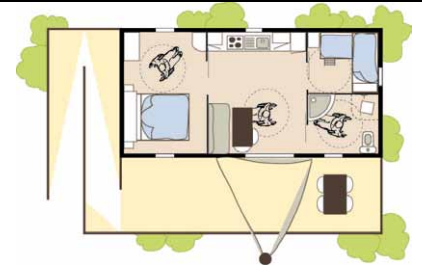
### COTTAGE PATIO 🌳🌳🌳



7 persons 33+14 m<sup>2</sup> - 3 bdrms

This accommodation with air conditioning is situated in a shady car-free area in the centre of the campsite.

### COTTAGE WHEELCHAIR FRIENDLY ♿ 🌳🌳🌳



4 pers. - 2 bdrms

This Cottage is suitable for disabled persons. Specially designed for easy access and space to move around in a wheelchair. Contrasting equipment and accessories facilitate visual recognition.

More detailed information on our website.

## THE Cabanes PREMIUM

ACCOMMODATION WITH SEMI-COVERED TERRACE SITUATED IN LANDSCAPED AREAS WHERE CARS ARE PROHIBITED. THESE MODELS HAVE BEEN CREATED WITH PARTICULAR ATTENTION TO INTERIOR DESIGN AND FINISH. AS AN ADDED BONUS, THIS ACCOMMODATION HAS AIR CONDITIONING, REINFORCED ISOLATION AND A SERIES OF ADDITIONAL FEATURES.

### CABANE ROBINSON



pers. 37+12 m<sup>2</sup>  
2 bedrooms

Spacious chalet situated close to the Lagoon pool and the water playground with large living room/kitchen and TV satellite. 12m<sup>2</sup> covered terrace with a hammock and 2 deck chairs.

### CABANE CANARDIÈRE



6 pers. 40+22 m<sup>2</sup>  
3 bedrooms

Situated close to a natural zone, this accommodation offers a satellite LCD TV. The 22 m<sup>2</sup> spacious terrace with a plancha and 2 lounge chairs is partially covered by a 8 m<sup>2</sup> pergola.

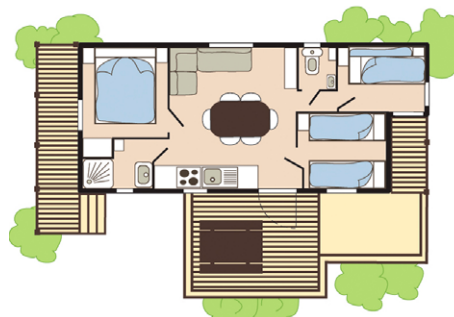
### CABANE PÊCHEUR ET JARDIN



4 pers. 33+16 m<sup>2</sup>  
2 bedrooms

Beachside accommodation (less than 250 meters from the beach). Offers also a satellite LCD TV. A large semi-covered terrace of 16 m<sup>2</sup>.

### CABANE PÊCHEUR ET JARDIN



6 pers. 38+20 m<sup>2</sup>  
3 bedrooms

Beachside model (less than 250 metres from the beach). A satellite LCD TV. A large semi-covered terrace of 20 m<sup>2</sup>.